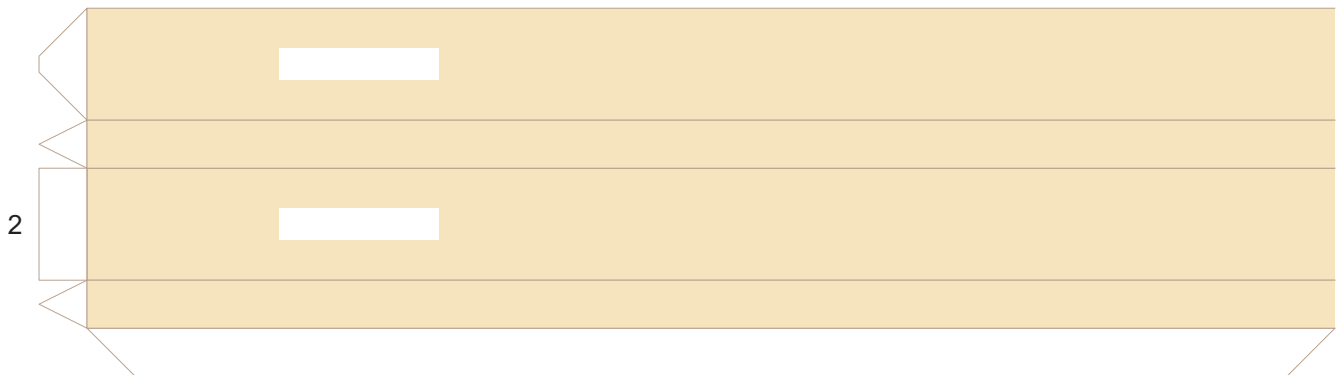
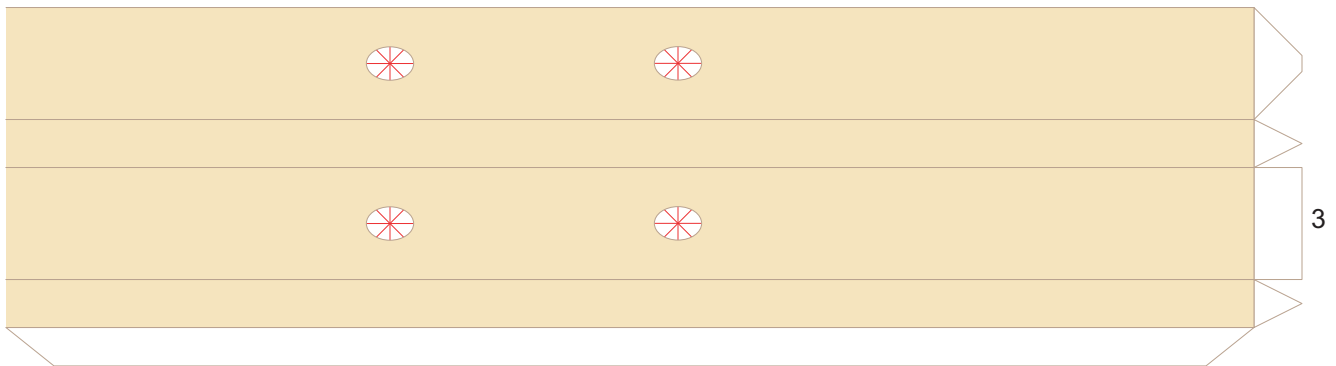
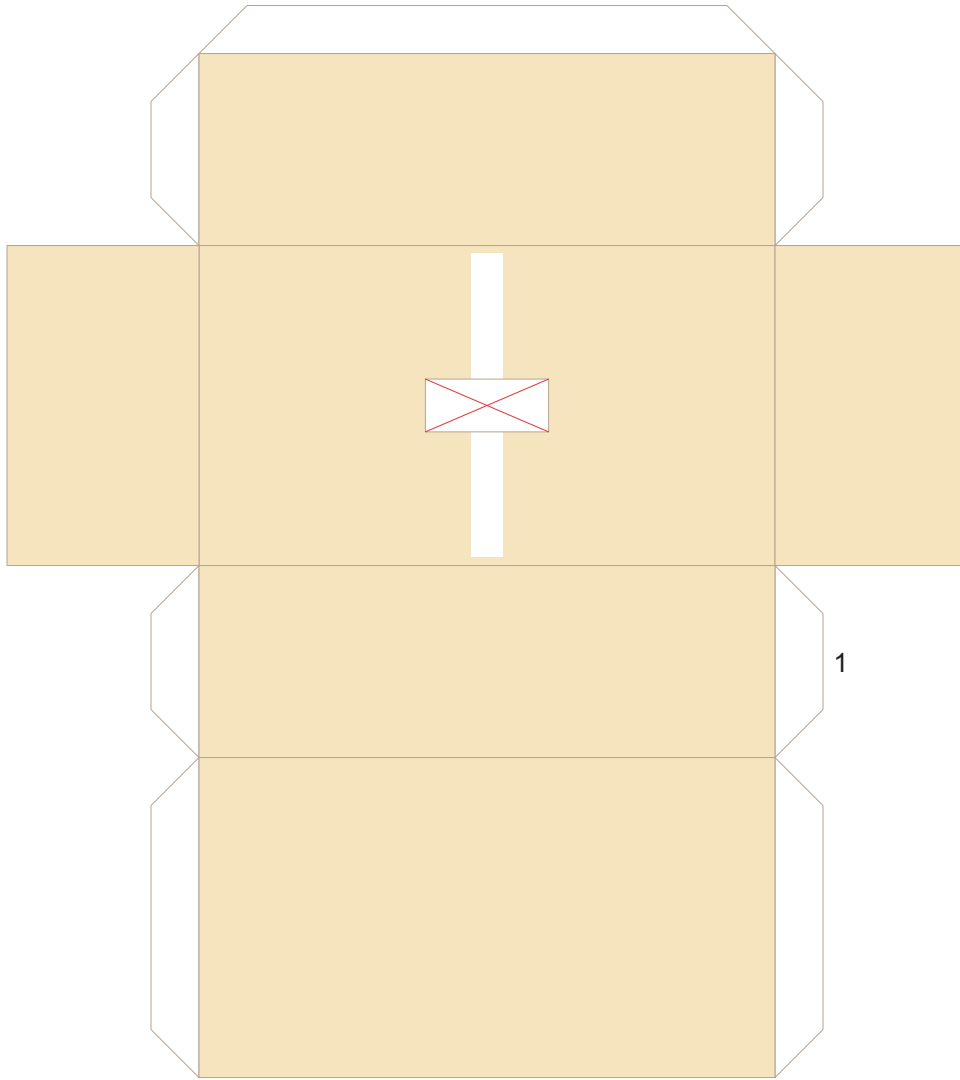


7.5 in (190.5 mm)

10 in (254 mm)



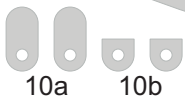
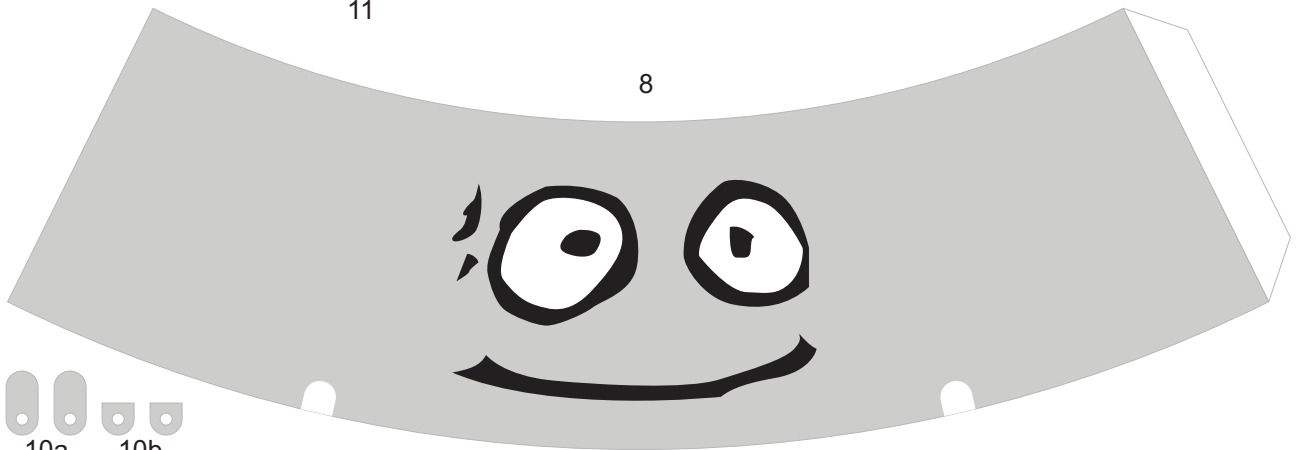
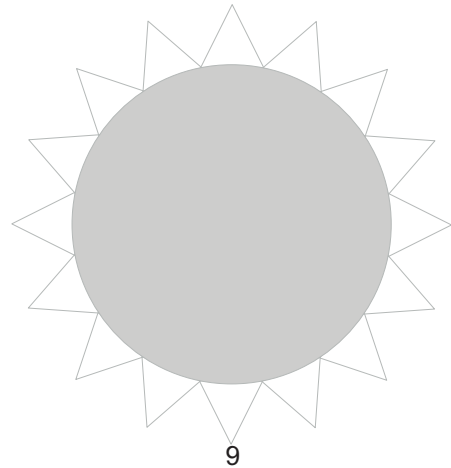
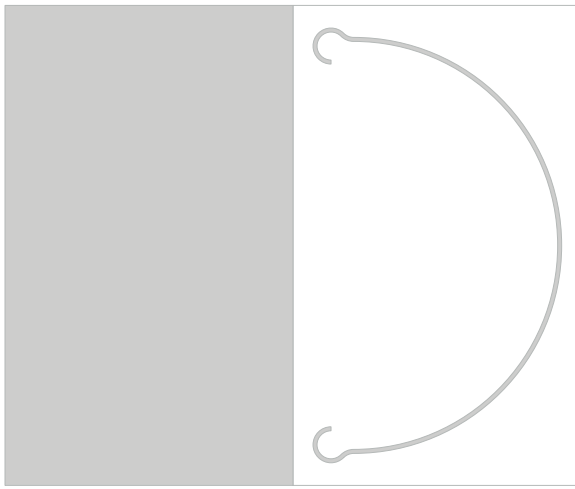
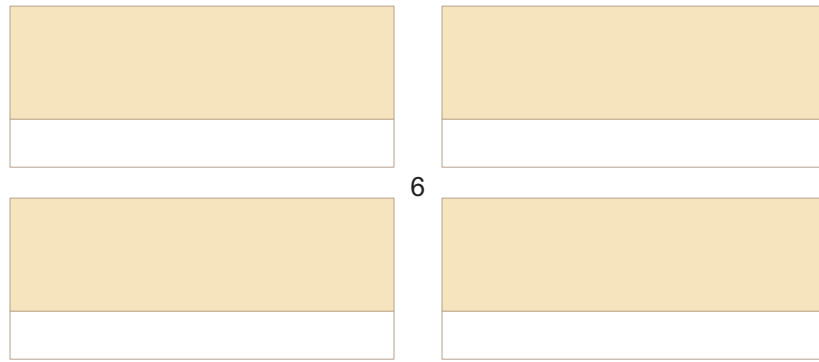
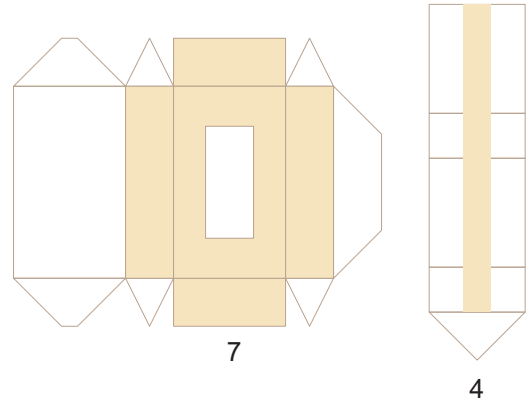
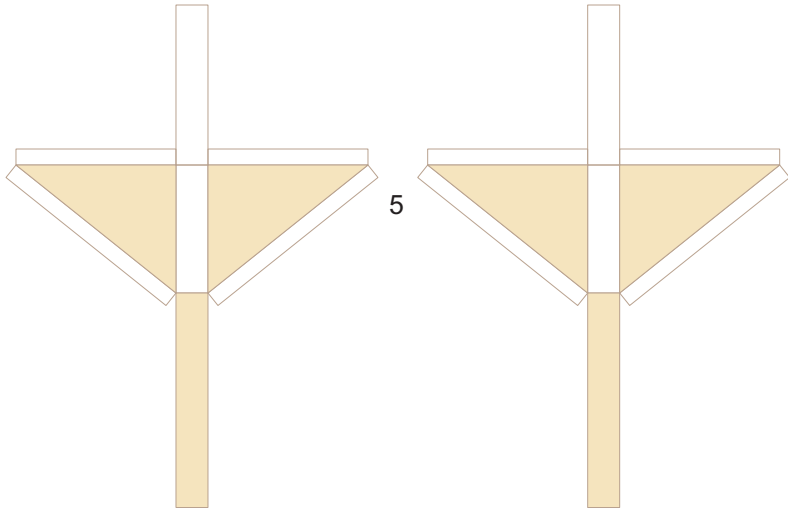
Brewster Rocket TM and (C) 2010 Tim Rickard, Syndicated by Tribune Media Services, Inc. All Rights Reserved.

"Bucky the Robot" from "Brewster Rocket: Space Guy!" (<http://www.gocomics.com/brewsterrocket>)

Page 1 of 4

7.5 in (190.5 mm)

10 in (254 mm)



Brewster Rockit TM and (C) 2010 Tim Rickard, Syndicated by Tribune Media Services, Inc. All Rights Reserved.

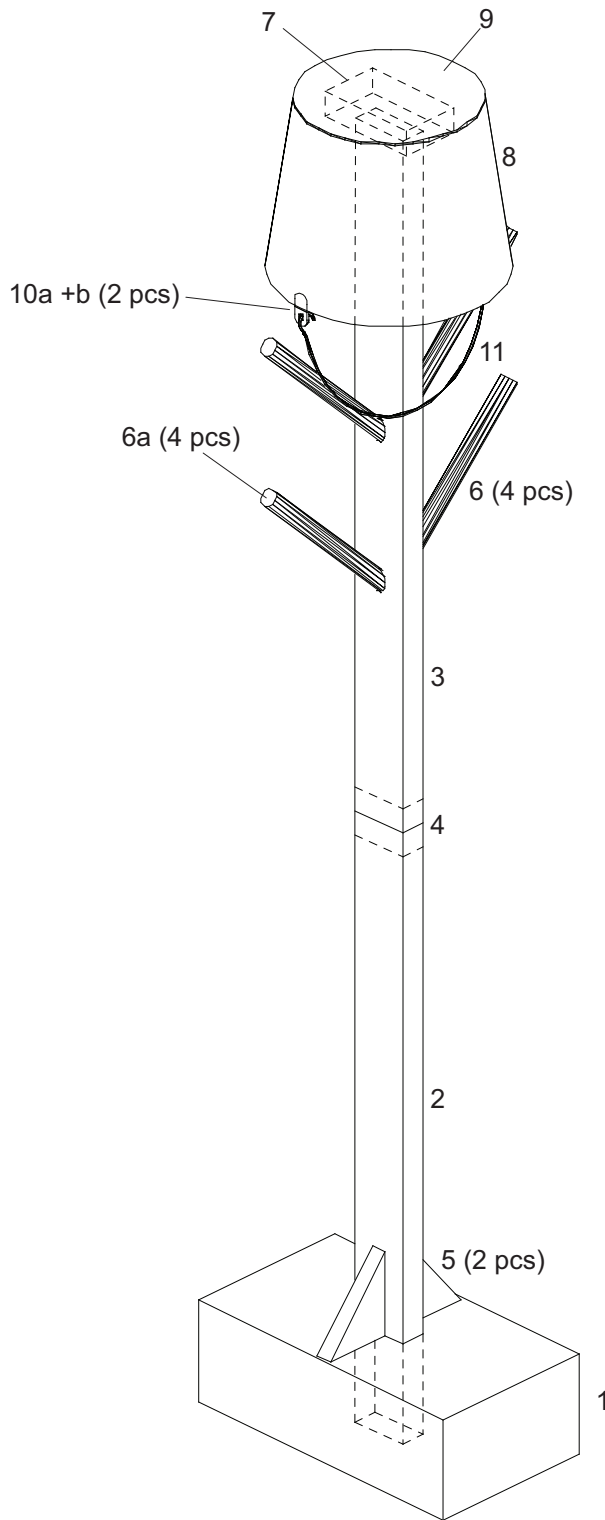
"Bucky the Robot" from "Brewster Rockit: Space Guy!" (<http://www.gocomics.com/brewsterrockit>)

Page 2 of 4

This model designed and copyright © 2010 by Mike Hungerford. E-mail: chthulhu@chthulhu.com; Web: <http://www.chthulhu.com/models.html>

7.5 in (190.5 mm)

10 in (254 mm)



Please read all of this instruction page before beginning assembly of your model!

This model of “Bucky the Robot” is a 1:6 scale replica of a mascot of the Los Angeles, CA, area science fiction convention, LosCon 36 (<http://www.loscon.org/36>), which is in turn based on the character from Tim Rickard’s comic, “Brewster Rokit: Space Guy!” (<http://www.gocomics.com/brewsterrokit>).

Part 1 is a rectangular solid. Score all the fold lines, including the bases of the four small triangular tabs in the middle of one face. Cut along the red lines to free those tabs, then cut out, fold, and glue the part (before closing the part, it is recommended that you add some weights (pennies or washers) to the inside to stabilize Bucky). Push the four small tabs into the part slightly. This is Bucky’s BASE. Set it aside.

Parts 2 and 3 are rectangular solids with one open end each. Score all the fold lines, including the small triangular tabs in the ellipses on two faces of part 3. Cut along the red lines to free those tabs, then cut out, fold, and glue the parts. Push the triangular tabs into part 3 slightly. Set the parts aside.

Part 4 is a connector. Score, cut out, fold, and glue the part. Apply glue to the inside of the open end of part 2 and insert part 4 halfway. Apply glue to the inside of the open end of part 3 and fit it over the exposed part of part 4. These three pieces comprise Bucky’s BODY.

Apply glue to the bottom end of the BODY and the four tabs of the BASE. Insert the BODY into the BASE until it rests against the inside bottom. Place the BASE on a flat surface and adjust the BODY quickly, before the glue sets, so that it stands straight up.

Parts 5 are triangular solids. Score, cut out, fold, and glue the parts. Note that one side is shorter than the other; this side fits to the BASE. Apply glue to the uncolored sides of the parts and position them where indicated on the BASE and BODY.

Parts 6 are cylinders. Do not score these parts! Cut out, glue, and roll the parts around a piece of coat hanger wire, or something of a similar diameter. These are Bucky’s ARMS

Check to see that the ARMS will fit into the elliptical openings on the BODY. Enlarge the openings if your ARMS are too large. There isn’t much room inside the BODY, so install the ARMS in right-left pairs. Apply glue to the triangular tabs on opposite sides of the BODY, and insert an ARM into either side. Adjust the arms until they stand out and up at a 45 degree angle. Repeat with the other pair of ARMS. Optional: cap the ARMS with parts 6a.

Part 7 is a rectangular solid. Score, cut out, and glue the part. Apply glue to the top end of the BODY and position part 7 as indicated. Set Bucky aside.

Part 8 is a shroud. Cut out, roll gently, and glue the part. Set it aside.

Part 9 is a disc. Score all of the tabs, then cut out the part. Fold all the tabs away from the colored side of the part. Apply glue to the inside of the smaller end of part 8. Insert part 9 from the larger end of part 8 and secure the tabs to the glue. This is Bucky’s HEAD. Set it aside.

Punch out the small holes in parts 10a and 10b. Cut out the parts. Glue one part 10b to the back of a part 10a so that the holes line up. Glue each part 10a to the HEAD where indicated.

Glue the HEAD to the top of part 7 as indicated.

Using the image labeled “11” as a template, form a BAIL out of florist’s wire or something similar and attach it to the HEAD via parts 10a+b. Optionally, cut out part 11 around the two rectangles; fold and glue it double with the colored sides out, and cut the part out. This part will be extremely fragile, but Bucky will be all paper!

Brewster Rokit TM and (C) 2010 Tim Rickard, Syndicated by Tribune Media Services, Inc. All Rights Reserved.