

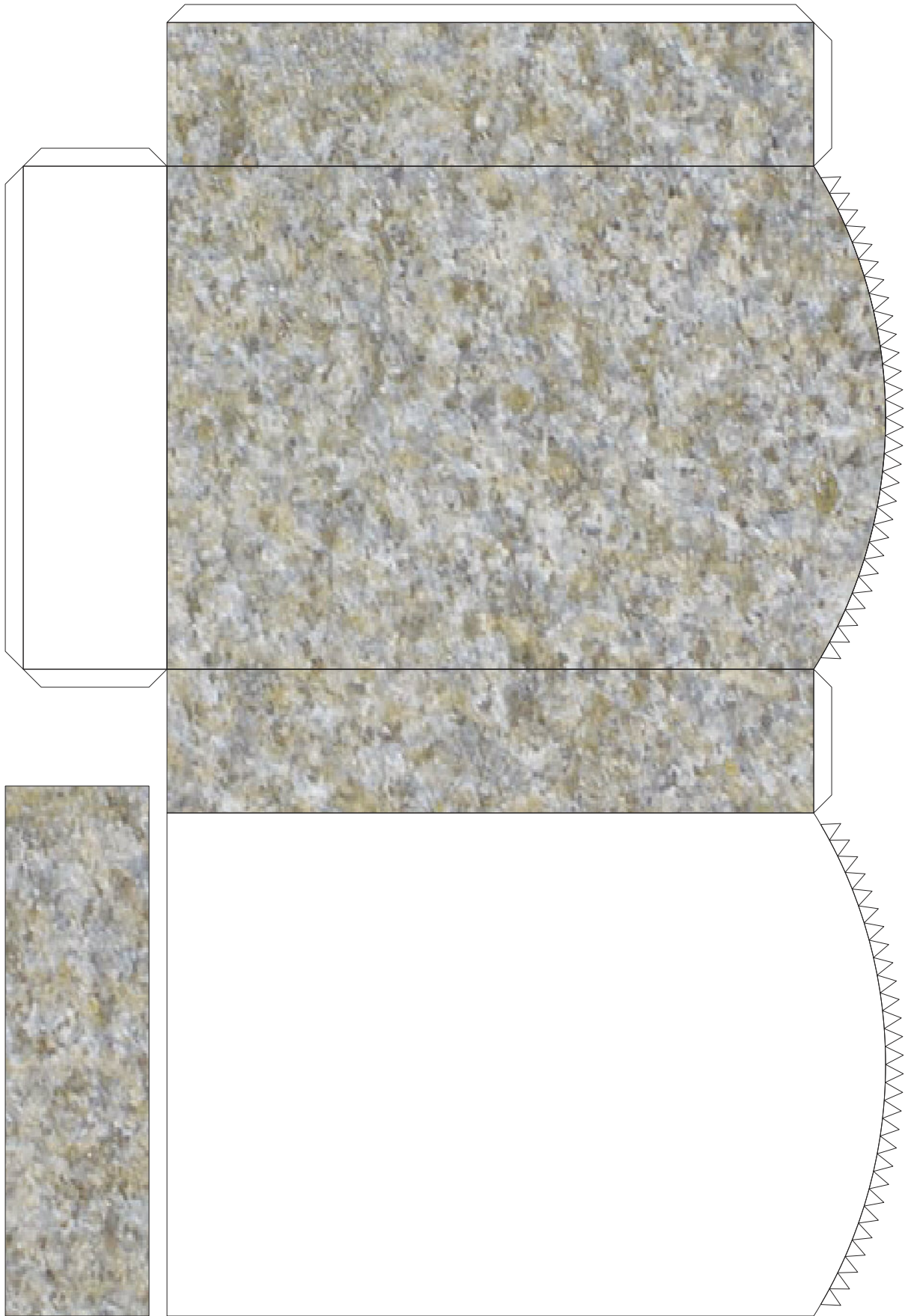
7.5 in (190.5 mm)

10 in (254 mm)



10 in (254 mm)

7.5 in (190.5 mm)



7.5 in (190.5 mm)

10 in (254 mm)

IF YOU
LIVED HERE,
YOU'D BE
DEAD
RIGHT NOW.

I'VE
FELT
WORSE.

</LIFE>

This model designed and copyright © 2007 by Mike Hungerford. E-mail: hungerford.mike@gmail.com; Web: <http://users.sdccu.net/chthulhu2/models.html>

7.5 in (190.5 mm)

10 in (254 mm)



This model designed and copyright © 2007 by Mike Hungerford. E-mail: hungerford.mike@gmail.com; Web: <http://users.sdccu.net/chthulhu2/models.html>

This is a model of a granite headstone based on a set of T-shirt designs by Linda, aka Dobbyknits. Some examples of Linda's witticisms are provided, along with several blank headstone faces that you can customize to suit yourself.

The model is approximately 1:6 scale, suitable for use with dolls and figures that are 10 to 12 inches tall.

Print the model pages onto the heaviest card stock your printer will accept. Assembly is straightforward:

Score all the lines and tabs.

Cut out the parts.

Pre-fold each scored line.

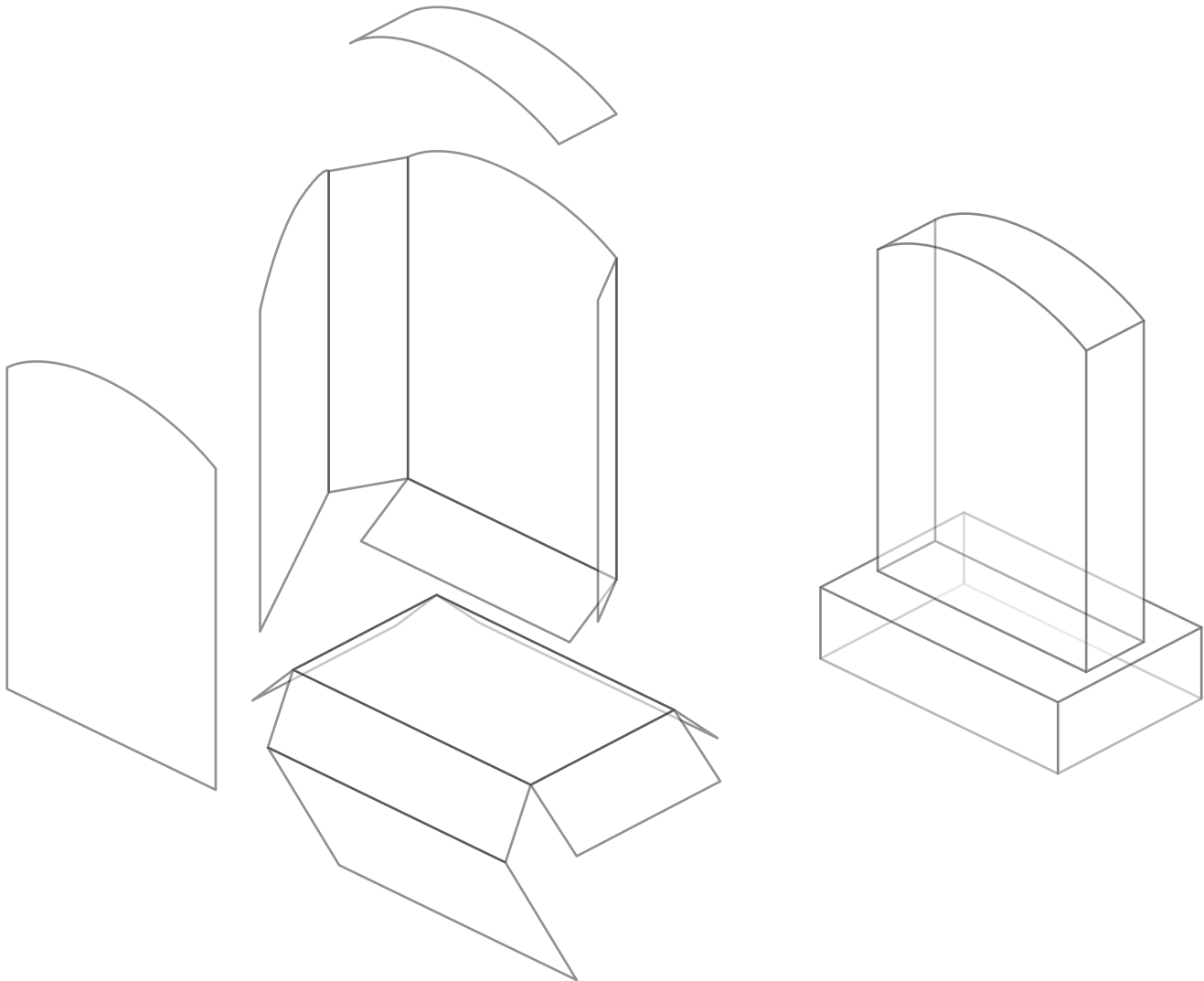
Glue the base into a box (white glue is recommended).

Glue the headstone into a box with a curved top.

Stuffing the base and headstone with tissue paper will give them more solidity.

Glue the headstone to the base.

Choose a face and glue it to the front of the headstone. If you use a non-permanent "Sticky Note" glue stick for this purpose, you can change faces as often as you wish.



10 in (254 mm)